

# TECHNICAL DATA SHEET

## FEM3500 SERIES MAGNETIC LOCK

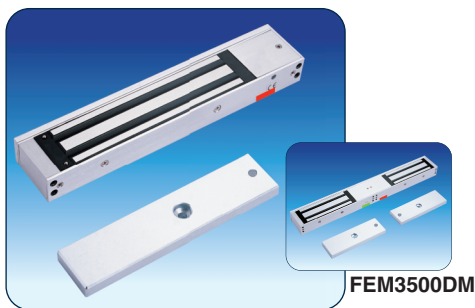
Fire tested up to 4 hours to both A.S. and B.S. standards. The FEM3500 magnetic locks range from the simple “no frills” non monitored economy line to the fully monitored, Lock Status Sensor (LSS), Door Status Sensor (DSS) and long distance Light Panel (LP) models. The holding force of the 3500 series is up to 280kgs and these devices are generally used to secure internal doors only. The devices can be inter-phased with building management and access control systems to control access and egress to hinged doors including fire rated models.

### FEATURES

- ◆ Power-off to release door/s
- ◆ No moving parts
- ◆ Built-in varistor (MOV) surge protection
- ◆ Satin anodised aluminum housing and zinc plated electromagnetic lock body
- ◆ 5 year warranty
- ◆ CE Approved
- ◆ 4 hour fire tested

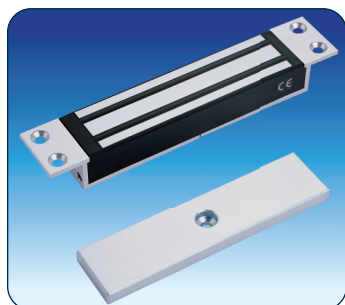
### SPECIFIERS STATEMENT

*“The magnetic lock must be equal to FSH model (state model number). Have a holding force of up to 280kgs. Fire tested to a 4 hour fire resistance rating tested to both Australian and British Fire Test Standards. The device must be provided with built in surge protection and accept both 12 and 24vDC. The magnetic lock shall also provide the following monitoring features (if required nominate LSS, DSS and LP). The magnetic lock must be provided with a 5 year warranty.”*



FEM3500M

FEM3500DM



FEM3500FM (Old FEM2)

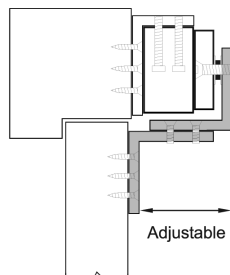
PART No.			
	FEM3500(S) FEM3500D(D)	FEM3500M(S) FEM3500DM(D)	FEM3500FM(Old FEM2)
HOLDING FORCE	Up to 280kgs		
VOLTAGE/CURRENT	Dual Voltage 12/24vDC, 12vDC=490mA 24vDC=245mA		
APPROVALS	4 hour fire rated to A.S. and B.S. standards		
MONITORING	NIL	LP LSS DSS	LSS
SIZE	Single door series magnet size: L= 238 x W= 48 x D= 25mm Single door series armature plate size: L= 185 x W= 38 x D= 12mm Single door series DSS-armature plate size: L= 185 x W= 38 x D= 12mm Double door series surface magnet size: L= 477 x W= 48 x D= 25mm Double door series armature plate size: L= 185 x W= 38 x D= 12mm x 2 pcs Double door series DSS-armature plate size: L= 185 x W= 38 x D= 12mm x 2 pcs		

# TECHNICAL DATA SHEET

## FEM3500 SERIES MAGNETIC LOCK

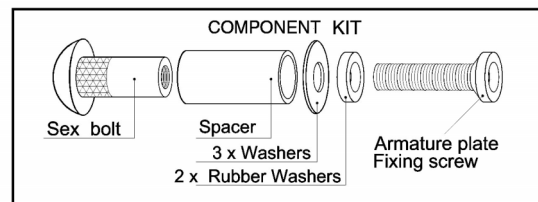
REFER TO PAGE 12 OF THE FSH BROCHURE AND/OR FSH WEBSITE FOR CORRECT PART NUMBERS

### TYPICAL FIXING OF MAGNETIC LOCK ON IN-SWINGING DOOR



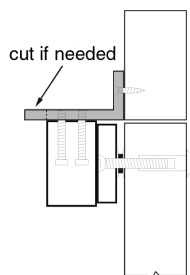
L & Z BRACKET ARRANGEMENT

### ARMATURE MOUNTING PLATE DETAIL



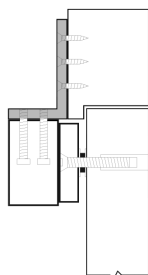
ARMATURE PLATES MUST BE INSTALLED WITH THE COMPONENTS SHOWN ABOVE. THESE COMPONENTS ARE PROVIDED WITH EACH ELECTROMAGNETIC LOCK. (TO AVOID MALFUNCTION OF THE LOCK DO NOT USE PARTS OTHER THAN THOSE PROVIDED ABOVE).

### TYPICAL FIXING OF MAGNETIC LOCK ON OUT-SWINGING DOOR



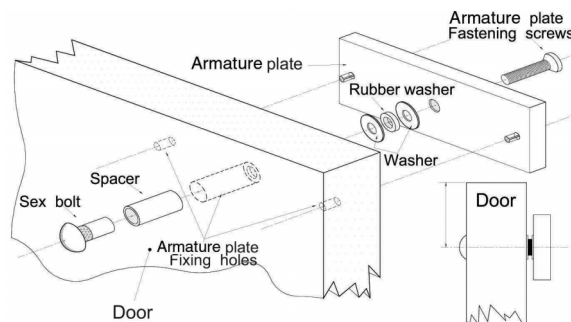
ADJUSTABLE L BRACKET

Adjustable L Bracket is for Flush Transom or Narrow Header.



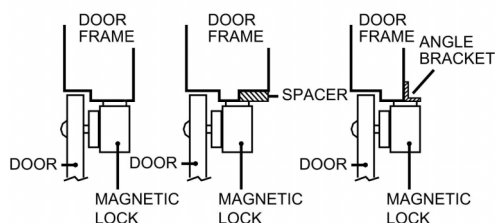
L BRACKET ARRANGEMENT

L Bracket is for Narrow Header.



ARMATURE PLATES MUST BE FIXED AS SHOWN ABOVE. DO NOT OVER TIGHTEN THE FIXING SCREW. THE ARMATURE MUST BE ALLOWED TO 'FLOAT' ON THE RUBBER WASHER.

### METHODS OF FIXING MAGNETIC LOCKS ON DIFFERENT FRAME PROFILES



### FIXING ARMATURE PLATE ON FRAMELESS GLASS DOORS

